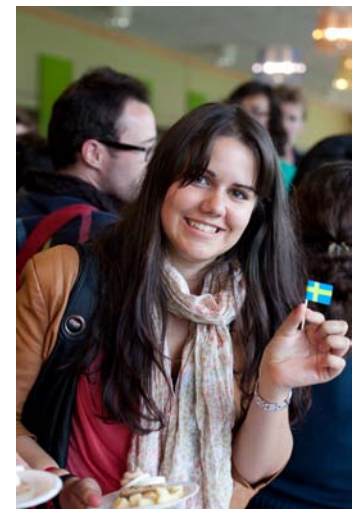




Lund University

PRE-ARRIVAL INFORMATION

Exchange semester Spring 2012



"The relationships between the students, teachers and coordinator were in many cases more personal, which was of huge benefit and motivation to me."

- exchange student,
Czech Republic

Contents:

Welcome to Lund University.....	1
Visas and Residence permits	2
City of Lund.....	2
Travelling to Lund.....	3
Arrival in Lund.....	4
Orientation Programme.....	5
Accommodation.....	6
Insurance and financial matters.....	7
Student life.....	8
Other useful information.....	9
Check-list.....	10
Contact information.....	10
Glossary.....	11

"If I have to advise next year's students, I would just say, have fun as much as you can while balancing with studies! Work at the nations, spend time with Swedes, they are truly wonderful people! Everything was positive for me during this stay. The only negative thing is that I could not stay longer!"

- exchange student, Belgium

"I really liked the way the class was carried out, in small classrooms and a very close relationship between teacher and the students.

Overall I can say that the experience of studying in Lund had a big impact on my life. I can't stress enough the importance of getting out of your comfort zone at home and throw yourself into a foreign environment and meet people from all over the world."

- exchange student, Switzerland

Do you want to know more about life as an exchange student in Lund?

Visit www.stars.liu.se! On this website you can search reports from former exchange students at Lund University.



STARS
Study Abroad
Report System

"A really active student life, with lots of activities and great people! I was in a Swedish corridor with 12 other people. I spent most of my spare time playing guitar, going to nations (student bars), playing sports, and going out to the all English comedy nights hosted by Wisecrackers. I would have to say that everything on my exchange was awesome. I played rugby, soccer, and cooked lots of good food."

- exchange student, Canada

Welcome to Lund University!

Spring 2012

It is an honour and a privilege to have you as a student. We hope that your stay at Lund University university will be an interesting and rewarding experience both for you and for us. Prior to your departure for Sweden, Lund University would like to provide you with some useful information. If you read this brochure carefully, we hope you will find answers to many of your questions.

About Lund University

Lund University was founded in 1666. Today it is an international centre for research and education and has approximately 46 000 students. The University has evolved into one of the most internationalized universities in Sweden, co-operating worldwide with a great number of universities, university networks and research institutes. Lund University is a member of prestigious networks such as League of European Research Universities (LERU) and Universitas 21. Annually some 3,500 international students choose to study in Lund. The University has exchange agreements with approximately 600 universities in more than 50 countries worldwide, including more than 400 within EU's Erasmus Programme. With a strong international profile, Lund University offers a rich and diverse student and academic body where you can meet people from all over the world, soak up the Swedish culture and even learn a new language.

With 46 000 students and popular student organizations offering a wide range of social activities for every taste, life as a student at Lund University is exciting, varied and lively!

We hope that this brochure will answer some of your questions that you might have when planning your stay in Lund. But please remember, although we try our very best to assist you, you are responsible for obtaining all the necessary information yourself.

Questions about courses and academics?

Your questions about course selection and other academic matters should always be put forward to your coordinator at Lund University. Your coordinator is the person who signs your Letter of Acceptance. On the Letter of Acceptance you can usually also find the contact details to your coordinator.

Questions about non-academic matters?

Throughout the semester you are welcome to contact the International Desk, at the Student services reception desk, with all sorts of non-academic issues. All kinds of questions are welcome; everything from how to get a new Enrolment form to where you can buy a bike. You find contact information to the International Desk in the end of this brochure.

We look forward to meeting you at Lund University!

Please Note!

This information does not confirm your status as a student at Lund University. To be accepted as a student at Lund University you must receive a "Letter of Acceptance" signed by your coordinator at Lund University prior to arrival.



Lund University Main Building

Photo: Mikael Risedal



Gamla Kirurgen; home of the International Desk at Student Services reception desk

Photo: Mikael Risedal

Prior to your arrival

Visa

A visa is a permit required from persons wishing to enter Sweden for a temporary visit or when passing through in transit. In Sweden, entry visas follow the rules set forth by the Schengen agreement.

If you are not a citizen of a Schengen country, you may need a visa to enter the Schengen zone. Since rules vary from country to country in Europe, please obtain relevant information from the Swedish Embassy or Consulate in your home country before going to Sweden. Be aware that the application process may take up to two months.

Residence Permit and Right of Residence

Nordic countries

Citizens of the Nordic countries (Denmark, Finland, Iceland, Norway) who are going to stay up to one year in Sweden do not need to register for right of residence. If you intend to stay longer than one year you should contact authorities in your home country and the Swedish Tax Agency to inform about your immigration to Sweden.

EU or EEA countries

Citizens of EU or EEA countries must apply for Right of Residence within three months from the entry into Sweden. Application forms are available on the Swedish Migration Board website. It is also possible to make the right of residence online on the Migration Board website. A certified copy of the European Health Insurance Card (or other proof of health insurance) is required along with copies of your Letter of Acceptance, valid identification and certificate of financial support.

Non EU or EEA countries

Students who are not citizens of an EU or EEA country must apply for a Residence Permit for study, at least 12 weeks before the intended date of departure to Sweden. You will need a valid passport, a "Letter of Acceptance", certification of financial support and health insurance coverage. Apply and request information via the Swedish Embassy or Consulate in your home country.

More information

Visas, Residence Permits and Residence Cards
www.migrationsverket.se

Information about Sweden, Skåne and Lund
www.studyinsweden.se
www.swedenintouch.se
www.sweden.se
www.skane.com
www.lund.se

Lund Tourist Office
Stortorget, Botulfsgatan 1A
Opening hours: Mo-Fr 10.00 - 18.00, Sat 10.00-14.00

Phone: +46 (0)46 35 50 40
E-mail: turistbyran@lund.se

About Lund

Lund, situated in the centre of the attractive and expansive Öresund region in southern Sweden, is one of the oldest cities in Sweden with a history more than one thousand years old. Over the centuries it has earned a reputation for being a place where people meet, and, today, more than ever, Lund is a meeting place for ideas and creativity.

Here, the university, science-park, multicultural atmosphere and historical surroundings make up a unique combination. This, along with its central situation, has turned Lund into an international city where ideas are born - ideas that build enterprises and achieve success both nationally and internationally.

Lund offers classical museums, art galleries and many other sights. Theaters, music and lectures, inviting restaurants and cafés, can all be found within walking distances in Lund's city centre.

Size: City of Lund covers 442.7 square km, of which 22.9 square km is densely populated. City of Lund is the twelfth largest municipality in Sweden.

Population: City of Lund has 110 000 residents.

Multicultural identity: 130 nationalities are represented among the residents of the city.

Young population: The age group 20-29 (21%) is remarkably higher than the national average (13%), due largely to the students at the university.

Average age: 38 years; in all of Sweden 41 years.

Working part of the population: 64.3% of the population between 20 and 64 years of age.

Commuting: About 32 000 people commute to Lund, and about 18 000 people commute from Lund.

Education: 58% of Lund's population between the ages of 25 and 64 have a university education. The total for Sweden as a whole is 31%.

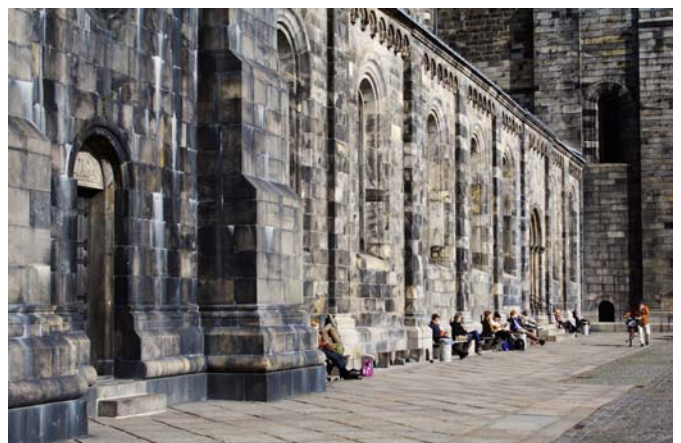


Photo: Maria Johansson

Travelling to Lund

By air

From Copenhagen Airport CPH/Kastrup
Copenhagen Airport, CPH, at Kastrup in Denmark, is the closest large international airport to Lund.

Malmö and Lund can be conveniently reached by train from Copenhagen Airport. The trip from Copenhagen Airport CPH/Kastrup to Malmö Central Station will take approximately 20 minutes and 35 minutes to Lund. Tickets can be purchased all the way through to Lund for app. SEK 135, but you may have to change train in Malmö. Bring cash for the vending machine. Please note that you have to buy the ticket before you board the train.

Landing on Kastrup airport means entering Denmark and persons of some nationalities will need a Danish transit visa. Please remember to check with the Danish Embassy/Consulate in your home country if you need a transit visa to Denmark or if a Schengen visa is enough.

From Local Airport Malmö MMX/Sturup

The local airport Malmö-Sturup, MMX, has frequent domestic flights mainly to and from Stockholm, but also international flights to and from for example London, Warszawa and Budapest.

There is a bus service ("Flygbussarna") from Sturup to Lund. The buses depart at least once an hour. The bus stops in Lund city centre and at the Central Railway Station. The ticket costs 89 SEK (ages 16-25) and 109 SEK for adults.

The taxi companies operating at the airport has agreed on a set price for journeys between the airport and Lund as well as other destinations. The price to Lund by taxi should not cost more than SEK 500 anytime of day or night. This fee should be settled with the driver beforehand.

More information

Airports

Kastrup: www.cph.dk/CPH/UK/MAIN/

Sturup: www.malmoairport.se

Airport transfer

www.flygbussarna.se

Trains

National: www.resplus.se

Regional: www.skanetrafiken.se

Ferries

www.polferryes.se

www.scandlines.se

www.ttline.com

Öresund Bridge

www.oresundsbron.com

By train

From Malmö

It takes approximately 15 min by local commuter trains ("Pågatåg/Öresundståg") to travel from Malmö to Lund. The trains depart approximately 4 times per hour during weekdays, somewhat less frequently in the evening and during weekends. Tickets cost app. SEK 42 and are available from the ticket machines in the station building or on the platform for local train departures. This procedure requires local currency (no larger than a SEK 100 note.)

From Stockholm or Oslo

Lund is located on the main railway from Malmö to Stockholm and Oslo. Travel time from Stockholm is about 4 hours on the express train "X2000" or 6-7 hours on "Intercity" trains.

By car

There are car- and passenger ferry connections to southern Sweden from Germany, with Scandlines and TT-Line, and from Poland with Polferries. There are also connections via Denmark from Germany and UK. To travel one way by car over the Öresund Bridge from Denmark costs approximately 360 SEK per car. Lund is conveniently reached from the main highways E6 and E22.

Taxi

Malmö - Lund by taxi is app. 300 SEK for a group of 1 - 4 passengers only small variations from that should be accepted. The trip takes app. 20 minutes.

The Swedish taxi market is free and most companies have recommended prices for defined routes (such as Sturup-Lund). Taxis in Sweden can be ordered in advance or found at taxi stops usually situated just outside stations, harbours etc. Hailing them in the street sometimes works but it is not the normal routine. Taxis normally accept all major credit cards.



Arrival in Lund

Arrival Day takes place on January 10 2012.

If you have applied for the course *Introductory Swedish - SUSA*, Arrival Day is the last day to arrive or else you risk losing your place in the programme. You must apply in advance to take part in the course.

On Arrival Day

Student mentors will meet you at the Central Railway Station in Lund (until 19.30hrs) and help you to our minivan shuttle service which will take you to Arrival Day services. Arrival Day is open from 9hrs (9 am) to 20hrs (8 pm) in the AF-building, Sandgatan 2. Please note that the shuttle service is only available on Arrival Day.

All procedures concerning the International Desk, the International Housing Office and the course *Introductory Swedish - SUSA* will be managed at one location on Arrival Day. It is very important that you bring your "Letter of Acceptance" to Arrival Day as you will need it during the day as well as for various other procedures throughout the semester.

Check-in desk

After you have left your luggage in the luggage room, you will be guided to the check-in. You will receive a "Welcome package" which contains useful information about Lund University and your stay in Lund. If you have applied through the online application form you will also receive a personal envelope containing your enrolment form and log in information to your student account (StiL) at Lund University.

Introductory Swedish - SUSA

Those of you who have registered for the course in the online application will find information and the schedule in the Personal envelope and Welcome Package handed to you at Check In during Arrival Day.

Housing

Please note that it is recommended that you have your accommodation sorted out before arriving in Lund. You are responsible of finding your own housing.



International mentors helping international students to our minivan shuttle service on Arrival Day.

Photo: Mikael Risedal

The International Housing Office (IHO) will go through necessary information, including the housing contract, hand out keys to those students who received housing through the IHO. Don't forget to bring documentation of the advance payment you have made to the IHO.

Other services on Arrival Day

Tickets for the excursions, city tours as well as for the official welcome party are for sale during Arrival Day.

As we welcome hundreds of international students on Arrival Day, there may sometimes be long waiting times and queues. We ask for your understanding and patience. However, if you have any questions, don't hesitate to ask the international mentors or Lund University staff. They will be present all day and are happy to help you.

When you have visited all the stations on Arrival Day, you will be given a lift by our minivan shuttle service to your new accommodation.

Arriving before or after Arrival Day

Please keep track of your application status on the website of International Housing Office (see link on page 6). If you have received accommodation through the International Housing Office, the date when your accommodation will be available is published there.

If you arrive in Lund later than 19.30 hrs on Arrival Day you will not be able to reach us before we close and will therefore need to organise alternative accommodation for the night. You can stay, for example, at a youth hostel in Lund or Malmö. The Tourist Office in Lund can help you during their office hours to book a hotel in Lund. You also find a hotel booking service on the Lund City website. Make all these arrangements in advance, before departing for Lund.

If you are planning to come to Sweden on a later date, you must inform your coordinator and the International Housing Office (if you have received accommodation from the IHO) of your new arrival date. When you arrive you should visit the International Desk to check in and the International Housing Office to get your keys (if you have received accommodation from the IHO).

More information

About Arrival Day

<http://www.lunduniversity.lu.se/arrival>

Book hotel online

www.lund.se/en/Tourist-Information/Accommodation/

Train hostel in Lund

<http://www.svenskaturistforeningen.se/upptack/Omraden/Skane/Vandrarhem/STF-Vandrarhem-Lund/>

Phone: 004646-142820

E-mail: info@hihostellund.se

Orientation Programme

The Orientation Programme for spring 2012 runs between 10 January and 22 January, 2012.

The Orientation Programme aims to help you settle in smoothly at the university and in the student life of Lund.

General Information Meeting

There are two chances to attend the General Information Meeting; one in the early afternoon and one later. Staff from the International Student Mobility Group and representatives from Studentlund, the Swedish police, IHO and StiL will be there to provide you with useful information.

Date: 11 January

Introductory Swedish - SUSA

The course offers introductory studies in the Swedish language and culture (3 ECTS). The course schedule will be provided in the Welcome Package handed out during Arrival Day. Please note that there is no on-site application!

Registration meeting and first lecture:

Date: 11 January

You are expected to prepare the first part of the course at home before your departure for Sweden. You find the material and reading instructions on links in the box below.

Registration Day

Registration Day is the day to meet your coordinator or to visit an introduction meeting. Please note that some meetings are only open for exchange students within faculty or department exchange agreements. Please check with your coordinator (the person who signed your Letter of Acceptance) to find out what meeting you need to go to. Exchange students on university wide agreements visit the student mobility group in Gamla Kirurgen to meet their coordinators.

More information

Swedish Language and Orientation Programme
<http://www.lunduniversity.lu.se/introduction-orientation>

Introductory Swedish
<http://www.lunduniversity.lu.se/o.o.i.s/24826>

Preparatory material for SUSA:
www.nordiska.su.se/komloss/

Reading instructions for preparatory course:
www.sol.lu.se/sfs/kursutbud/susa.html

International Mentor Programme
<http://www.lunduniversity.lu.se/international-students/campus-life/mentors-and-friends>

Other activities for international students

The International Mentor programme

You apply for the mentor programme online along with with your application for courses, Swedish courses and accommodation. If you apply you will be contacted by your mentor group in July. The mentor group consists of 3-4 Swedish students (your mentors) and 15-25 international students.

Your mentors are familiar with Lund and the way things work in this student city. Maybe you will tour the city, have dinner, go to one of the nations' parties or something similar together in the group. You can always contact your mentors for any advice, so do not miss this opportunity to learn more about being a student in Lund! Your mentors do this voluntarily because they think it's a fun way of meeting people from all over the world.

Excursions - Skåne Tour

During the Orientation Programme you will have the opportunity to join an excursion to interesting places in the Skåne region. The cost for the trip is app. 250-350 SEK. Tickets are sold at Studentinfo in the AF-building.

City Tours by bus

Get to know your new home town! A 45-minute bus tour of the campus area, student accommodation and other important sites in Lund. Tickets are sold on Arrival Day and at the International Desk.

Welcome Reception

The Vice-Chancellor, Per Eriksson, of Lund University and the mayor of Lund, Annika Annerby Jansson, give all new international students a warm welcome to Lund.

Welcome Party

The Official Welcome Party is organized by the student union at the Faculty of Engineering. Tickets are sold during Arrival Day.

Activities at the Nations

The Student Nations organise a wide range of activities parallel with the Orientation Programme. You will receive more information about this on the General Information Market.



International Mentors welcoming international students during the Orientation Programme.

Photo: Maria Johansson

Accommodation

Lund is a small university city with a limited amount of accommodation and many students are looking for housing at the same time. Therefore, we recommend that you have your accommodation sorted out before your arrival. We cannot guarantee housing to all students and ultimately it is your own responsibility to find housing.

International Housing Office

International Housing Office (IHO) administers a limited number of student rooms for exchange and international master's students at Lund University. Application for housing is made in the online application where you also apply for SUSAs, mentor programme etc. In order to be considered for a room you must be accepted by your coordinator at Lund University and your online application must have been submitted before the deadline. If you have stated preferences in your application, IHO will try to meet your request, but please be aware that there is no guarantee that they can offer housing according to your choices. If IHO can offer a room they will inform you of this via the "follow your status"-page. You will not be informed by other means i.e. email. If you receive housing you need to make a prepayment equal to one-months rent to keep your room reservation. This prepayment is not a deposit as it will go towards the price of your housing contract. If the payment is not made on or before the designated deadline the reservation will be cancelled. All information about this will be posted on "follow your status page" at the IHO website (see link below). Please be aware that Lund University does not guarantee housing to all students and ultimately it is your own responsibility to find housing.

Bopoolen.nu

During previous semesters demand for accommodation has exceeded supply. Thus, it is a good idea to search for housing elsewhere than only via the IHO. Contact the IHO if you find accommodation elsewhere and have applied through IHO as well.

The Housing Pool, "Bopoolen", is an advertisement agency for housing run by the Lund University Student Unions (LUS). The service is managed via their website (see link below) where you can post ads for housing as well as search for housing ads. Bopoolen.nu does not apply a queuing system and does not charge any fees for their services.

It has come to Bopoolen's attention that some landlords demand a large deposit to be paid before any agreement is signed. Bopoolen recommends that you only pay one month of rent in advance, which is standard in Sweden. Don't send any money if you aren't sure that the apartment exists and that you will get access to it. Make sure that you get a receipt for all payments you make.

When searching for housing on your own, please beware of fraudsters. From time to time fraudsters are contacting people registered under Housing needed/bostad sökes and put in fake ads on housing available. Do not send any money through Western union to these persons.

Please visit the websites stated under "More information" for more information about other accommodation agencies.

Student Residences

The international students who arrange their accommodation through the IHO will in some cases be placed in student residences ("studentkorridor") together with either Swedish or international students or both. Living in a student residence is a unique way of living, which provides both opportunities and challenges:

- An important aspect of living in a student residence in Sweden is cleaning. There is usually a cleaning schedule for the common rooms. Please remember to fulfil your obligation to clean the kitchen and residence!
- Specific laundry rooms are available for common use in each residence area. You should book a time in advance to make sure the facilities are available. Tumble dryer and drying cabinet are also included in the equipment.
- All garbage is sorted for recycling. At every recycling station you will find different containers for kitchen garbage, newspapers, carton boxes, coloured glass, uncoloured glass, metal, batteries and hard plastic. It is important to throw your garbage in the correct container.

More information

Information about accommodation
www.lunduniversity.lu.se/housing

International Housing Office (IHO)
<http://www.lunduniversity.lu.se/iho>

Follow the status of your housing application
cfsrv10.cfadm.lu.se/apply/follow/

Bopoolen
www.bopoolen.nu/english

Links to other accommodation agencies
<http://www.lunduniversity.lu.se/o.o.i.s/24816>



Photo: Charlotte Carlberg-Bårg

Insurance and financial matters

Insurance

Health insurance

All students in Sweden are currently covered by the personal injury insurance (the general student insurance) that is obtained on behalf of universities and colleges within the State insurance system by the Central Student Grants Committee. All students that study at Lund University are therefore covered for accidents occurring within the framework of their studies (for example: during classes, while studying at a university library and when travelling from dorm to class). This provides international students cover for certain medical expenses. It also contains a certain accident cover in the form of a fixed amount in conjunction with disability or death, as well as liability and legal expenses cover. It applies twenty-four hours a day.

Note that this insurance only applies in Sweden, so if you want to travel outside of Sweden you will need additional insurance coverage which you should get in your home country. Remember to bring some sort of certificate of the insurance.

If you are an EU/EEA citizen you must bring your European Health Insurance Card. This document is a health insurance, which will guarantee you medical treatment on the same conditions as Swedish citizens. Contact your regional social insurance office for the European Health Insurance Card or other document that proves your insurance.

Please note that regulations for medical care do not apply to dental care. In most cases international students are not entitled to subsidized dental treatments, no matter if they are registered as residents or not, and will have to pay the total cost of a treatment. It is a good idea to arrange for a dental check-up before leaving home.

Home and travel insurance

Lund University offers no insurance covering thefts, burglary, fire etc. It is your responsibility to keep a sufficient insurance and arrange third-party-liability insurance. You need travel insurance that covers your travel to and from Sweden and the time you spend in the country prior to registration, or after your courses have finished, and insurance to protect your personal belongings. All students are strongly advised to have a complete insurance cover to avoid extreme costs that might occur. Carefully consider which level of insurance you need. Read the information found via the link in the information box below and pay particular attention to the coverage's restrictions and exclusions. It is very important that you obtain complementary insurance before leaving for Sweden.

More information

Health insurance "Student IN"
www.lunduniversity.lu.se/o.o.i.s/24812

Contactperson for health insurances at Lund University
E-mail: Annike.Hemmingsson@pers.lu.se

Financials

Currency

The Swedish currency is called "krona" (SEK) and "öre" (100 öre = 1 krona). Bank notes are available in denominations of 20, 50, 100, 500 and 1,000 kronor, coins in 1, 5 and 10 kronor. You need approximately SEK 8,000 per month to cover your living expenses (housing included) in Sweden. Note that Euro is not used in Sweden.

Opening a bank account

Before departing your home country, please make sure that all necessary arrangements are made to prevent cash-flow problems from occurring during your stay in Sweden. Order a credit card or consider other means of payment. Most credit cards are accepted in Sweden and ATM:s, Automated teller machines, can be found throughout the cities and on the university's main campuses. Banking in Sweden might be much easier with advice from your own home bank. Check with them before departure to Sweden to see if they have a corresponding Swedish bank partner.

To open an account in Sweden you will need proof of admission (ex. Letter of Acceptance) from the university, a valid passport and you must also be registered at a Swedish address. Swedish banks do not usually charge a fee for opening an account but there will usually be fees for their other different services. When you open an account in Sweden you will receive an IBAN (international bank account number) which you can use together with the Bank's SWIFT address to transfer money from your bank abroad to your new account in Sweden. We recommend that you give someone at home a power of attorney to transfer money on your behalf. It usually takes at least one week to transfer money from your bank abroad to your Swedish account.

Cheques and cash

Please note that personal, traveler's or international cheques are not accepted by Swedish banks. Do not bring large amounts of cash to the bank office. Money laundering legislation requires the bank to ask questions about the transactions and banking business you want to make. If a customer does not present identification or provide a satisfactory explanation as to why the customer wants the bank to perform a certain service, the bank is not permitted to perform the requested service.

Money exchange

It is possible to change money at exchange offices at Copenhagen Airport, Malmö Airport and the Central Railway Station in Copenhagen and Malmö as well as the Forex office opposite Lund Central Railway Station.

More information

Bank sites
www.seb.se
www.handelsbanken.se
www.nordea.se (only in Swedish)
www.fofspar.se (only in Swedish)
www.danskebank.se (simplified English version)

Money exchange and rates
www.forex.se

Student Life

Academics

Courses for exchange students

Apply for all academic courses via your coordinator at Lund University. If you need information about your courses, have a look at the department's homepage first. If you can't find the information you need in advance, you must get in touch with your coordinator. The coordinator is the person who signed your Letter of Acceptance from Lund University. If you can not find the name of your coordinator, you are welcome to contact the International Desk.

Literature

Be prepared for the fact that books and materials are quite expensive. However, it is sometimes possible to buy them second hand or borrow them from one of the university libraries.

Student organizations in Lund

Studentlund

One student life - one membership

Lund's student life is unique. The combination of nations, students' unions and the Academic Society is not only one of a kind, it is one of the strongest reasons why new students flock to Lund every semester. Membership of Studentlund gives you access to everything that makes Lund such a fantastic city to study in. The student life gives you many opportunities for personal development and enables you to gain valuable knowledge and experiences outside the lecture halls. A membership in Studentlund gives you access to everything from good food, fun nightclubs, interesting talks, exciting media, guaranteed monitoring of education, entertaining theatre, considerable influence within the University, municipality and region and lots of grants and student discounts. The vast majority of the student organisations' activities will only be available to Studentlund members.

How to become a member

Being a member of Studentlund really means that you are a member of three organizations – a student union, a nation and the Academic Society (AF). As a student based in Lund you can choose to join all three, or none at all. You become a member by visiting the nation of your choice. Bring your LU identity number (included in your personal envelope on Arrival Day) and information about what faculty you will study at. Please note that exchange students can not register with Studentlund online. When you have paid your fee, your student card will be sent to your Swedish address. The membership costs approx 250 SEK.

More information

Courses

www.lunduniversity.lu.se/global-cooperation/student-exchange/courses-for-exchange-students
www.lunduniversity.lu.se/faculties
www.lunduniversity.lu.se/sas

Campus life

www.lunduniversity.lu.se/campus-life
www.studentlund.se/eng/

Student nations

The nations' primary task is organizing extra-curricular social activities. The nations' main activities comprise serving food and running pub and club nights, but they also include sporting activities, nation newspapers, choirs, grants and accommodation. All the nations are named after geographical locations in Sweden and there are currently 12 nations within the Studentlund cooperation, all representing different cities or areas in Sweden. Membership in a nation provides you with the chance to really get to know Swedish student culture. They are open to all students and there are no entrance requirements.

Student unions

The student unions guarantee high quality in education at Lund University. The unions are monitoring education and organizing student influence through some 1000 posts at all levels within the University. In addition to monitoring education, the unions arrange career fairs, lectures, social events and welcome activities for new students.

Contact your student union if you have any questions, or if problems should arise concerning your studies. Which student union you belong to depends on which faculty you study at.

The Academic Society

The third cog in the Lund student machinery is the Academic Society (AF). AF's width and size allow scope for student activities such as radio, television, Studentinfo, poetry, lectures, "spex", amateur theatre, orchestras, choirs, archives and drama. The AF building in Lundagård is the physical meeting place for all students, not least in the study areas and activities in Athen. AF Bostäder is the largest provider of student accommodation in Lund.

What is the difference?

Briefly, the unions handle student rights and arranges many activities connected to your education and future employment. The nations are primarily social clubs and the Academic Society offers various activities having to do with culture and media.

For someone who is not familiar with the nation and student union system in Lund, it might feel a little confusing. Our best advice is to take the opportunity during the Orientation Programme to read through the Student Guide and visit a couple of the Nations to choose the one you like the most.



Photo: Mikael Risedal

Other useful Information

Weather & Clothing

It is winter in Sweden from mid-November to the end of February. Snow is expected in most parts of the country, but in the southern parts there will probably be rain mixed with snow. The temperature varies between -10 to +5 degrees Celsius.

Spring arrives in the end of March and lasts throughout April and May. The temperature will rise to app. 20 degrees Celsius.

The wonderful summer comes to Lund in June and stays until mid September. Summer temperature lies app. between +17 - 30 degrees Celsius.

In the autumn, September - November, rain starts to fall and the temperature decreases to app. + 5 degrees but can go below 0 degree Celsius.

In December winter arrives again and snow might start to fall. Since Skåne, the very southern part of Sweden, is very flat it is a good idea to bring windproof and also warm clothing to Sweden.

Telephone

Opening a telephone account

There are several opportunities to open a telephone account in Sweden. The oldest, and probably most used, company is Telia. Telia is situated at Knut den Stores Torg (very close to the railwaystation). Another opportunity is Tele 2 they are said to be one of the cheapest phone companies. When you have access to Internet you can use Skype to make phonecalls. This is the cheapest opportunity, especially for long distance calls.

Note that collect calls from Sweden are expensive.

Cell phones

If you already have a GSM cell phone (frequencies 900 and 1800), remember to bring it to Sweden. However to be able to use your cell phone together with a Swedish cash card your cell phone can not be restricted to be used only with the operator in your home country. If you do not have a GSM cell phone you can easily buy one while in Lund.

Academic Calendar

Spring semester 2012: begins Monday 16 January and ends Sunday 3 June.

The exact duration of the terms may vary slightly from faculty to faculty, and also from year to year depending on which weekday the official dates are that year. It is therefore advisable to check for exact dates directly with the department(s) concerned.

Electricity

The electricity in Sweden is 220 volts and 50 cycles/sec (Hz). As British and American outlets differ from Swedish, you may need to bring a transformer and/or adapter for your electrical appliances from your home country.

E-mail address

It is important for us and your mentors to be able to get in touch with you when you have arrived to Lund University, therefore we recommend that you have a web-based e-mail address (for example Gmail or Yahoo) when you come to Lund.

All enrolled students will be provided with a Lund University e-mail account, called StiL (student in Lund), once they are registered. You should use this e-mail address as soon as it has been registered. The e-mail address information will be included in your personal envelope.

Internet

As a student you have access to internet via student computers and the wireless network all over the university by using your StiL details. Lund University is also connected to Eduroam.

Since the number of international students pursuing studies at Lund has increased dramatically over the past years, the university has had to secure additional accommodation through private contractors that may require students to share facilities and/or make their own arrangements for Internet access.

If your accommodation has been provided through the International Housing Office and you have an Internet connection, please note that it can take a while before you actually can go online.

Public Holidays 2012

- New Year's Day (Nyårsdagen): Jan 1
- Epiphany (Trettondagen): 5 Jan
- Good Friday (Långfredagen): 6 April
- Easter Sunday (Påskdagen): 8 April
- Easter Monday (Annandag påsk): 9 April
- Walpurgis night: 30 April
- May Day (Första maj): 1 May
- Swedish National Day: 6 June
- Midsummer Eve: 22 June
- All Saints' Day : 3 Nov
- Christmas Eve (Julafton): 24 Dec
- Christmas Day (Juldagen): 25 Dec
- Day after Boxing Day (Annandagen): 26 Dec
- New Year's Eve (Nyårsafton): Dec 31

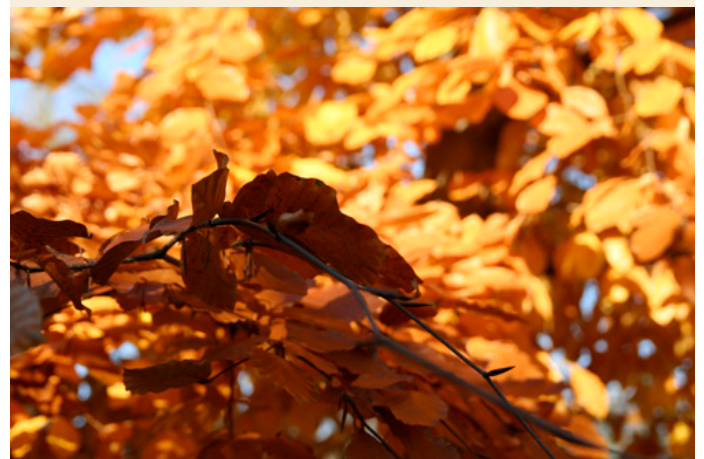


Photo: Maria Johansson

Check-list

Before leaving for Lund:

- Check if you need a Visa or Residence Permit
- Check the department's home page at Lund University to find out details about the courses you are accepted to or contact your coordinator.
- Check your insurance coverage
- Your passport must be valid for at least the duration of your stay in Sweden. You need your passport to open a bank account in Sweden among other things.
- Get prescriptions if you need any kind of medicine
- Contact your local home bank to avoid any banking problems in Sweden

Bring to Lund:

- Your Letter of Acceptance
- International Hostel membership card for discounts at the Youth Hostel (if you are a member).
- Swedish currency for immediate use (for trains, taxi etc.).
- Warm clothes, since winters in Sweden can be quite cold and windy.
- Your GSM mobile phone and laptop (if you have a cellphone or computer)
- Adapter for your electrical appliances, if necessary.
- Information material about your home university and country. Please give this to your coordinator at Lund University!

International Housing Office (IHO):

- If you can't arrive on Arrival Day contact the IHO in advance and inform them when you intend to arrive.
- If you arrive after IHO opening hours, you have to arrange accommodation for the night.
- If you have received confirmation of housing, you must pay one months' rent in advance to secure your room reservation.
- Bring documentation of the advanced payment you have made.

Family back home:

- Inform your family about your contact details in Lund.
- Reassure your family that you are in Lund - call home as soon as you have arrived!

Contact information

International Desk

Telephone: +46-46-222 0100
E-mail: desk@stu.lu.se

Web: www.lunduniversity.lu.se/international-desk

Mailing address:
Lund University
International Desk
Box 117
S-221 00 Lund

Visiting address:
Sandgatan 3 (Gamla Kirurgen), Lund

Desk Office hours:
Mon-Fri 10-14

During the Orientation Programme:
Mon- Fri 10.00 - 15.00

International Housing Office

Telephone: +46-46 222 01 00
Fax: +46-46-222 8895
E-Mail: iho@se.lu.se

Web: www.lunduniversity.lu.se/iho

Mailing address:
Lund University
International Housing Office
Box 117
S-221 00 Lund

Visiting address:
Sandgatan 3 (Gamla Kirurgen), Lund

Office hours:
Mo - Fr 13.00 - 15.00

Introductory Swedish

Mailing address:
Lund University
Dept. of Nordic Languages
Gunilla Ek Werner
Box 117
S-22100 Lund

Telephone: +46-46-2228710
Fax: 046-2223211
E-mail:
gunilla.ek_werner@sol.lu.se



www.facebook.com/internationaldesk

Glossary

Phrases and useful words:

Hej = Hello/Hi
Hejdå = Goodbye
Tack = Thank you
Ja = Yes
Nej = No
Alltid = Always
Aldrig = Never
Ursäkta mig = Excuse me
Varsågod = you are welcome
Var bor du? = Where do you live?
Vad är klockan? = What time is it?
Talar du svenska/engelska? = Do you speak English?
Ja, jag pratar svenska/engelska = Yes, I speak Swedish/English
Jag heter___ = my name is___
Vad heter du? = What's your name?
Hur mår du? = How are you?
Var kommer du från? = Where do you come from?
Jag mår bra = I am fine
Hur gammal är du? = How old are you?
Vad gör du? = What are you doing?
Jag studerar = I am studying
Vad kostar det? = How much does it cost?
Skål! = cheers!
Stå'n = Slang for city centre ("Were going to the city/
Downtown" = "Vi ska in till stå'n")

Universitet= University
Lärare = Teacher
Elev/Student = Student
Bok = Book
Bibliotek = Library
Föreläsning = Lecture
Dator = Computer
Pengar = Money
Svenska kronor = name of Swedish money; "kronor", SEK
Valuta = Currency

Feelings:

Jag älskar dig = I love you
Jag gillar dig = I like you
Jag hatar dig = I hate you
Jag är ledsen = I'm sorry/ I'm sad (depending on the context)
Förlåt! = I'm sorry/Forgive me!

Typically Swedish:

Fika = Typically Swedish afternoon snack
(Often coffee and something sweet including the socializing
that goes with it)
Glögg = The Swedish version of mulled wine, served around
Christmas
Lagom = Just right; not too little, not too much
Nja (nej+ja) = No and yes
Påtår = a refill of coffee
Smörgåsbord = Smorgasbord
Älg = Moose (elk)

Foods & Drinks:

Mataffär = Grocery store
Frukost = Breakfast
Lunch = Lunch
Middag/kvällsmat = Dinner
Vatten = Water
Läsk = Soda/Sweet drink
Kaffe = Coffee
Kaka = Cookie
Tårta = Cake
Vin = Wine
Godis = Candy, Sweets
Mjölk = Milk
Grönsak = Vegetable
Frukt = Fruit
Äpple = Apple
Banan = Banana
Flingor = Cereal
Bröd = Bread
Smör = Butter
Ost = Cheese
Kött = Meat
Gris = Pork
Nötkött = Beef
Fisk = Fish
Skaldjur = Shellfish
Kyckling = Chicken
Vegetariskt = Vegetarian
Köttbullar och lingonsylt = Meatballs and lingonberry jam
Hamburgare = Hamburger
Pommes Frites = French Fries
Korv= Sausage
Knäckebröd = Crispbread
En dagens, tack! = Today's special, please! (mostly lunchtime)

Numerals:

0 = Noll	6 = Sex
1 = Ett	7 = Sju
2 = Två	8 = Åtta
3 = Tre	9 = Nio
4 = Fyra	10 = Tio
5 = Fem	



**Welcome to
Lund University!**