



# International Master's Programme in Embedded Electronics Engineering

Liang Liu, Helene von Wachenfelt, Jan. 9, 2020



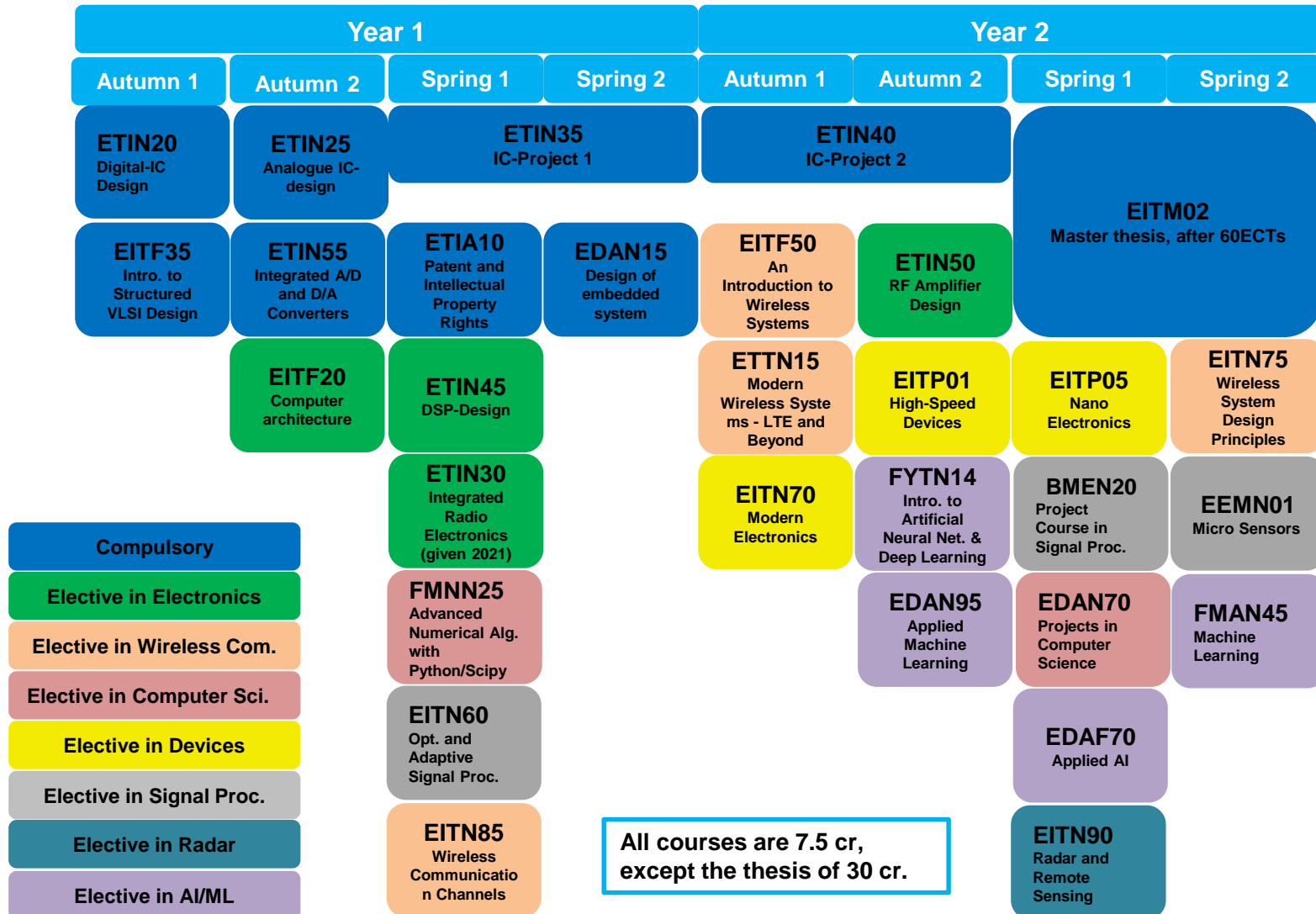
# Courses in EEE program from autumn 2020

---

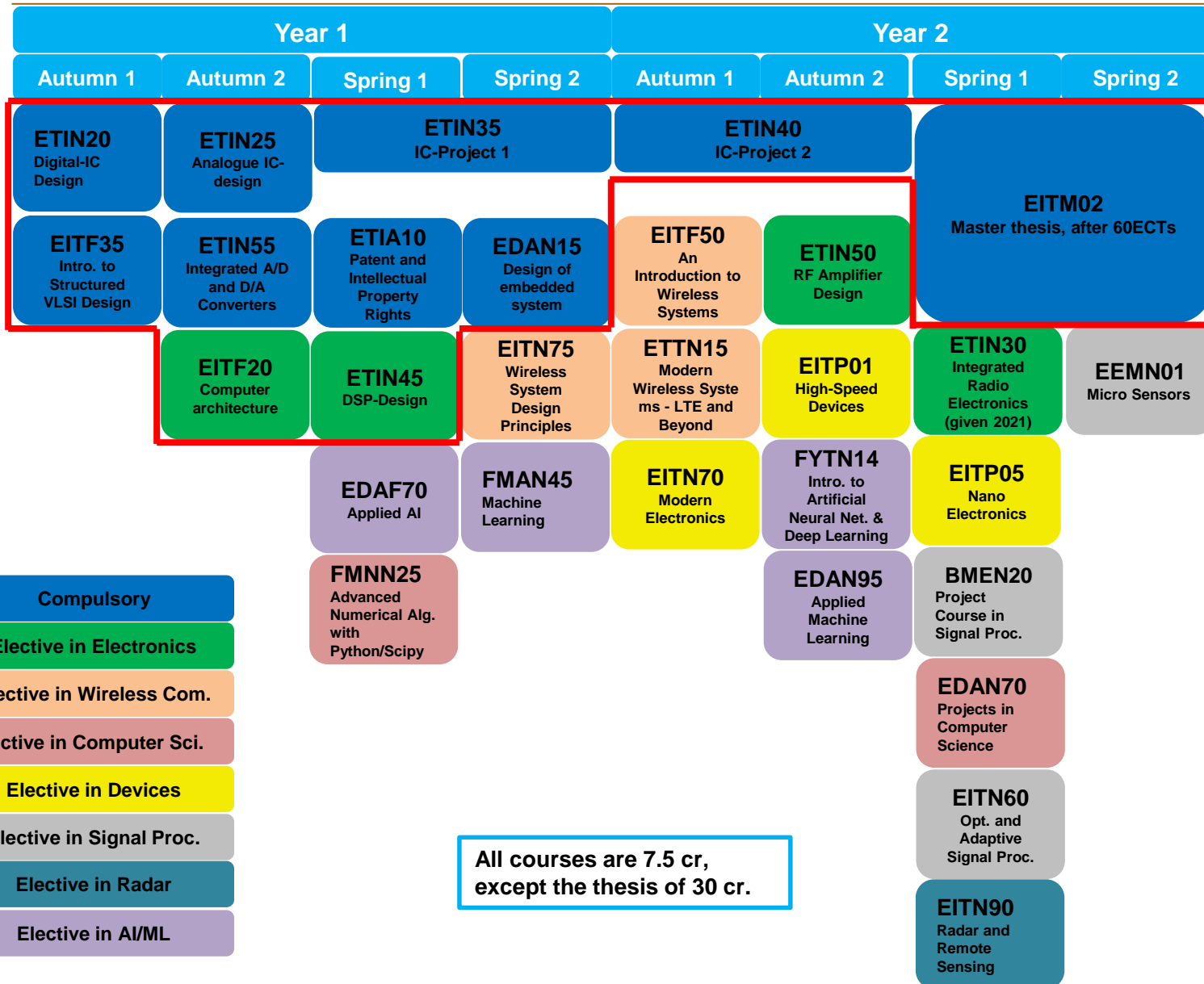
- Experiences and know-how in embedded electronics engineering are **widely applicable** and are (most of the time) **the key enabler** to emerging applications.
- The **core of the programme** is applied studies in digital **IC design**, analogue/RF IC design and mixed signal/data conversion IC design.
- Besides the compulsory courses in electronics, the EEE program provides a **wide range of elective courses** in machine learning, AI, wireless communication, computer science, signal processing, etc. Students can include **four** of these courses in their degree.
- Full time studies is 30 credits per semester. Each semester is divided into two study periods. We advise students **not** to take **more than 3** courses of 7.5 cr in each study period.



# Courses Overview from autumn 2020



# Suggested Digital Track

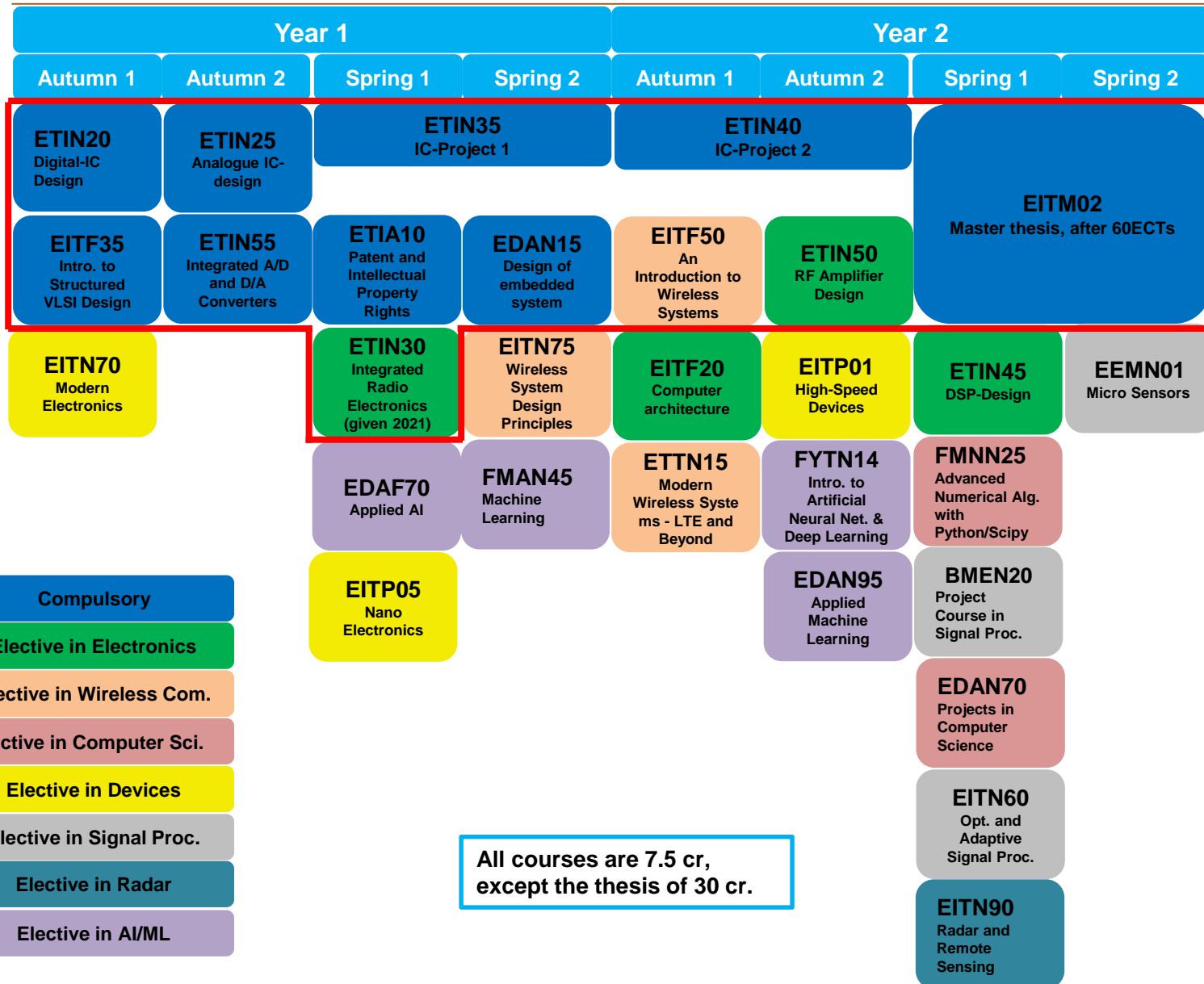


- Compulsory
- Elective in Electronics
- Elective in Wireless Com.
- Elective in Computer Sci.
- Elective in Devices
- Elective in Signal Proc.
- Elective in Radar
- Elective in AI/ML

All courses are 7.5 cr, except the thesis of 30 cr.



# Suggested Analogue Track



- Compulsory
- Elective in Electronics
- Elective in Wireless Com.
- Elective in Computer Sci.
- Elective in Devices
- Elective in Signal Proc.
- Elective in Radar
- Elective in AI/ML

All courses are 7.5 cr, except the thesis of 30 cr.

